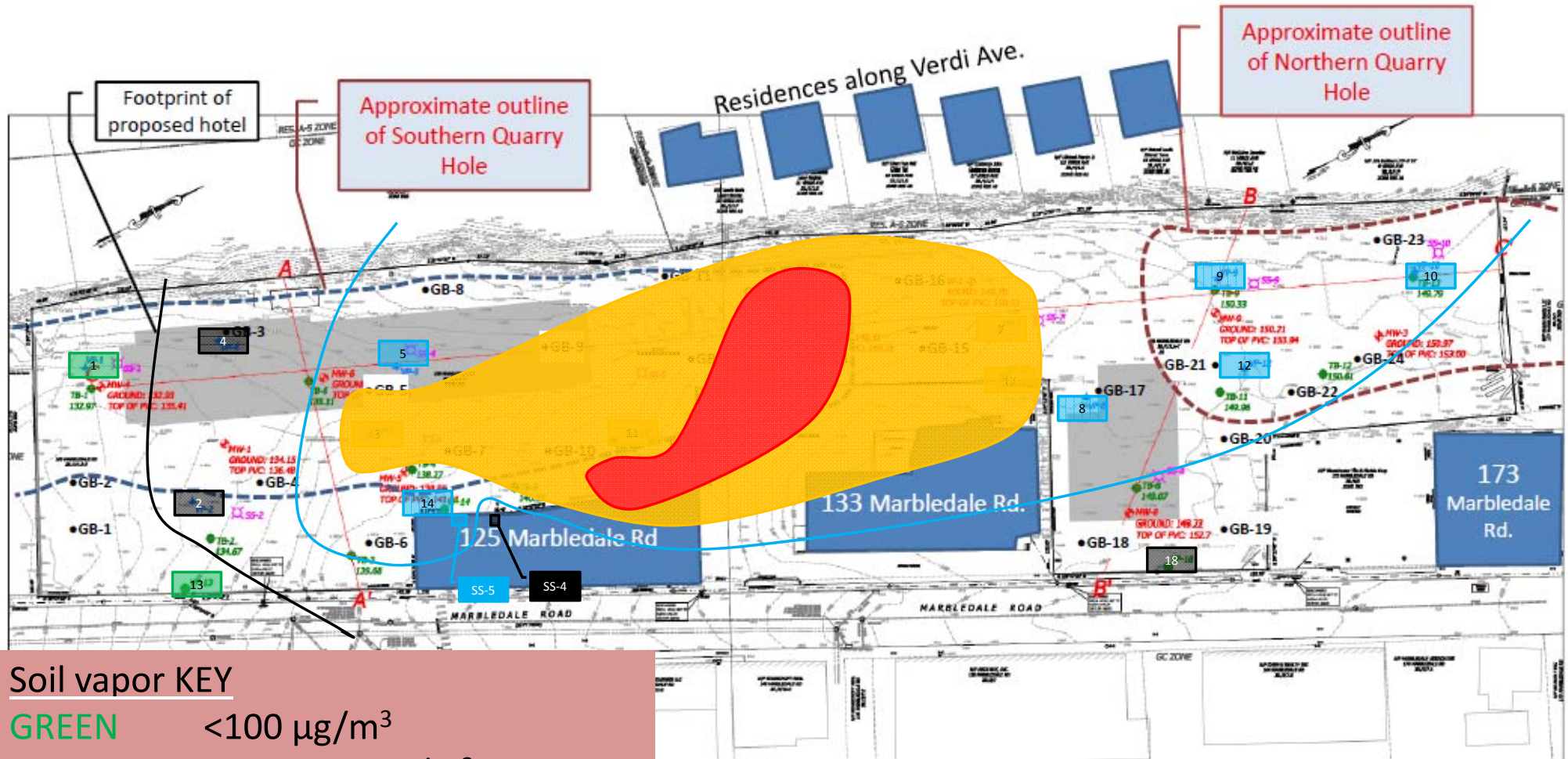


## Concentration gradients of Total Freons



### Soil vapor KEY

- GREEN <math><100 \mu\text{g}/\text{m}^3</math>
- BLACK 100-1,000  $\mu\text{g}/\text{m}^3$
- BLUE 1,000 – 10,000  $\mu\text{g}/\text{m}^3$
- YELLOW 10,000 – 100,000  $\mu\text{g}/\text{m}^3$
- RED >100,000  $\mu\text{g}/\text{m}^3$

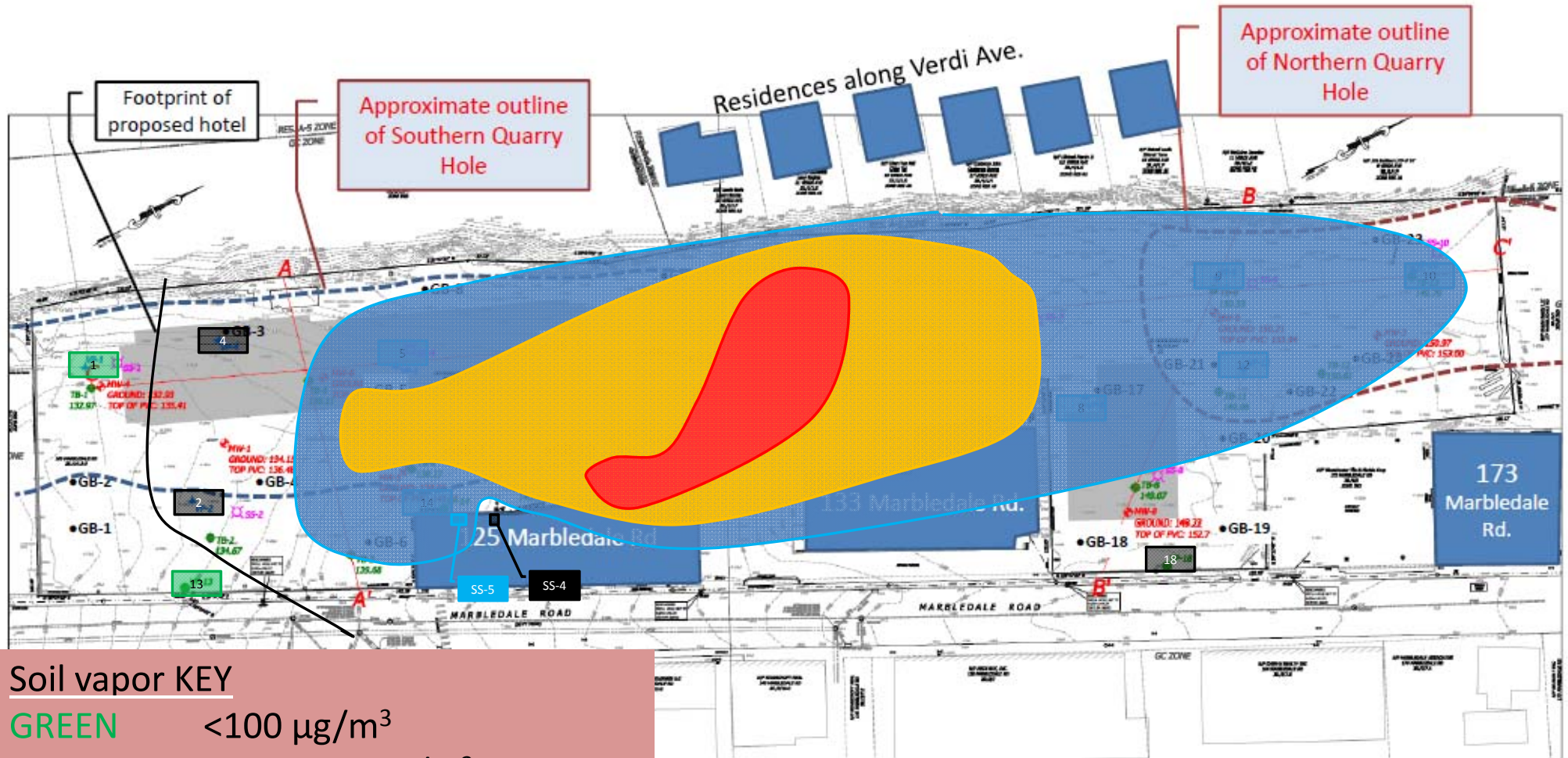
Hughes Environmental Consulting Syracuse, NY

Adapted from HydroEnvironmental Solutions (2016) Remedial Investigation Report, Figure 3.

Note that locations of soil borings installed in 2013 are approximate.



## Concentration gradients of Total Freons



### Soil vapor KEY

GREEN	<100 $\mu\text{g}/\text{m}^3$
BLACK	100-1,000 $\mu\text{g}/\text{m}^3$
BLUE	1,000 – 10,000 $\mu\text{g}/\text{m}^3$
YELLOW	10,000 – 100,000 $\mu\text{g}/\text{m}^3$
RED	>100,000 $\mu\text{g}/\text{m}^3$

Hughes Environmental Consulting Syracuse, NY

Adapted from HydroEnvironmental Solutions (2016) Remedial Investigation Report, Figure 3.

Note that locations of soil borings installed in 2013 are approximate.